

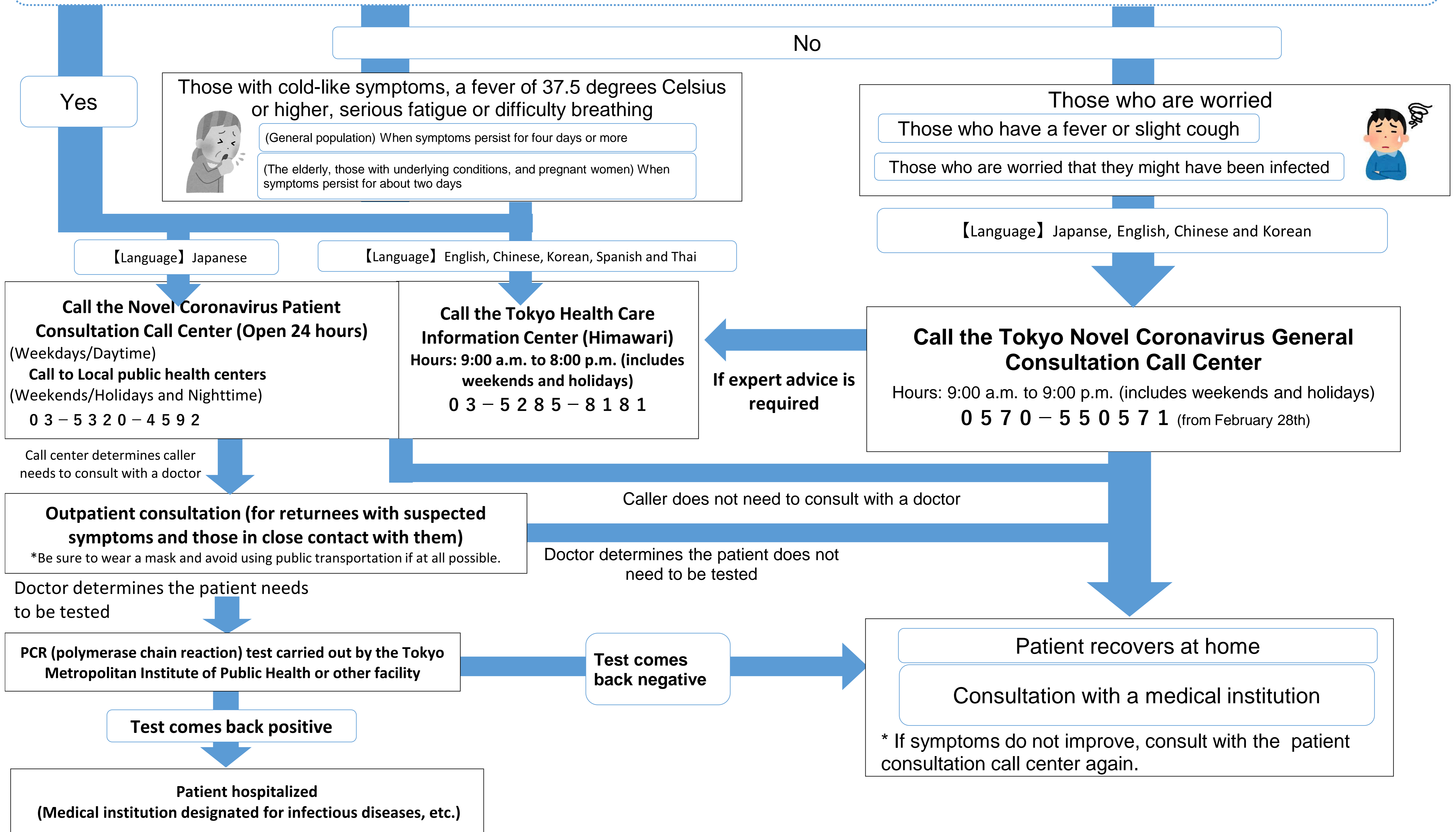
# Message to the People of Tokyo

## "What to do when you are worried that you might be infected with the novel coronavirus (COVID-19)"

(Those who suspect they might be infected) Did any of the following occur in the two weeks leading up to the development of symptoms?

a) You were in close contact(\*1) with a person infected with novel coronavirus and 1) you have a fever or 2) respiratory symptoms

b) You visited an endemic area(\*2) or were in close contact with someone who traveled to or recently came to Japan from such an area and 1) have a fever of 37.5 degrees Celsius or higher and 2) respiratory symptoms.



(\*2) Endemic area: Hubei and Zhejiang provinces in the People's Republic of China

(\*1) Close contact is defined as contact over a long period or living with a person suspected of having the virus, contact through examining or providing care to a patient without taking protective measures against becoming infected, contact with the bodily fluids of someone suspected of being infected, etc.